













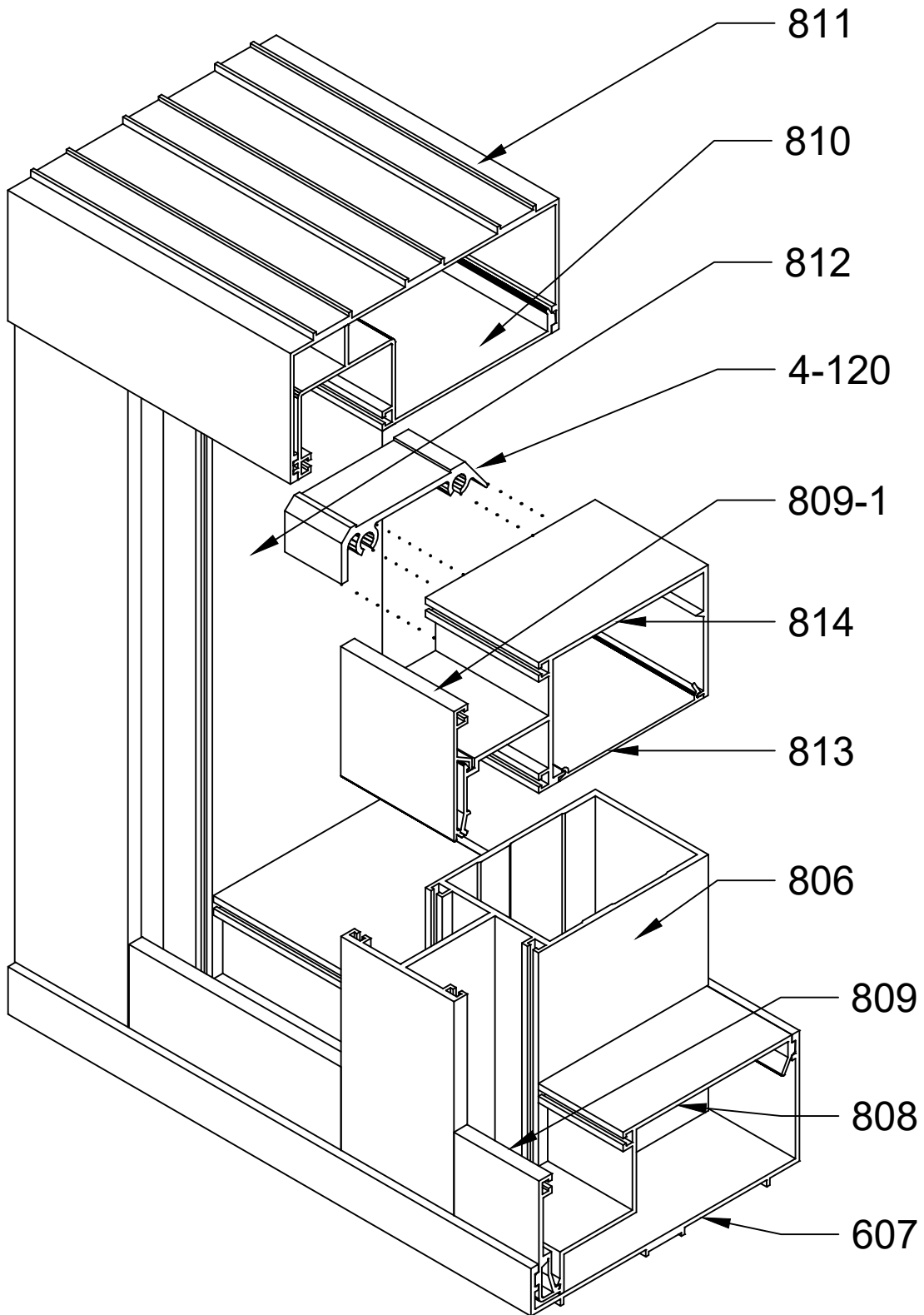
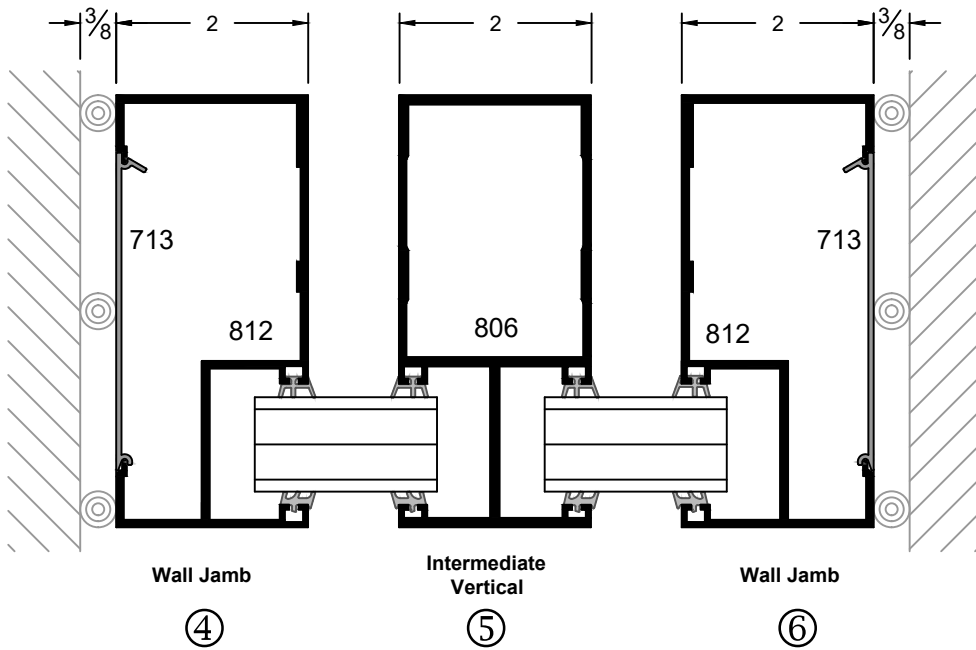
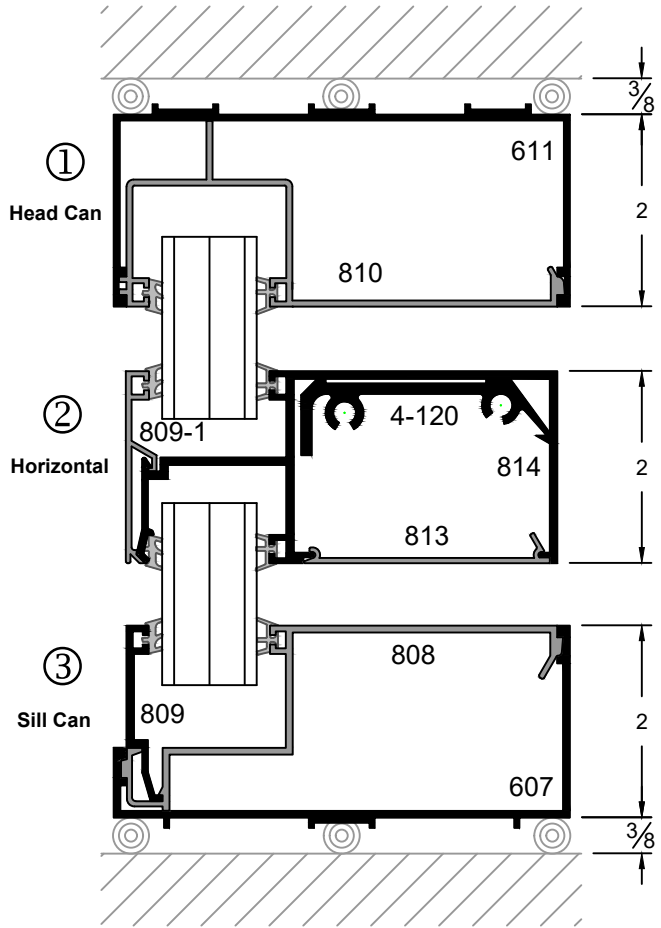
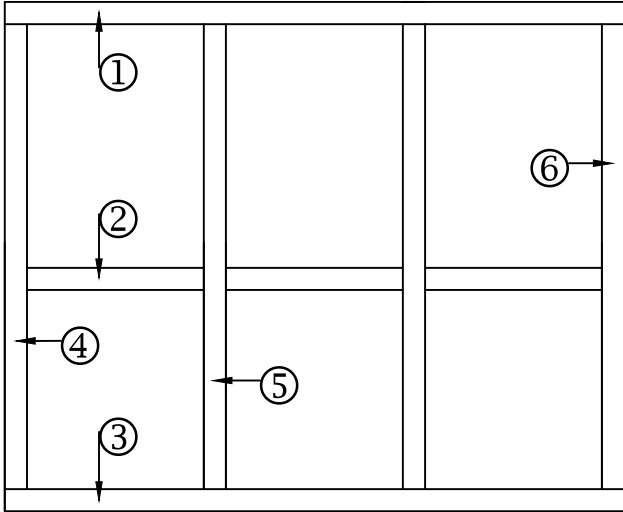
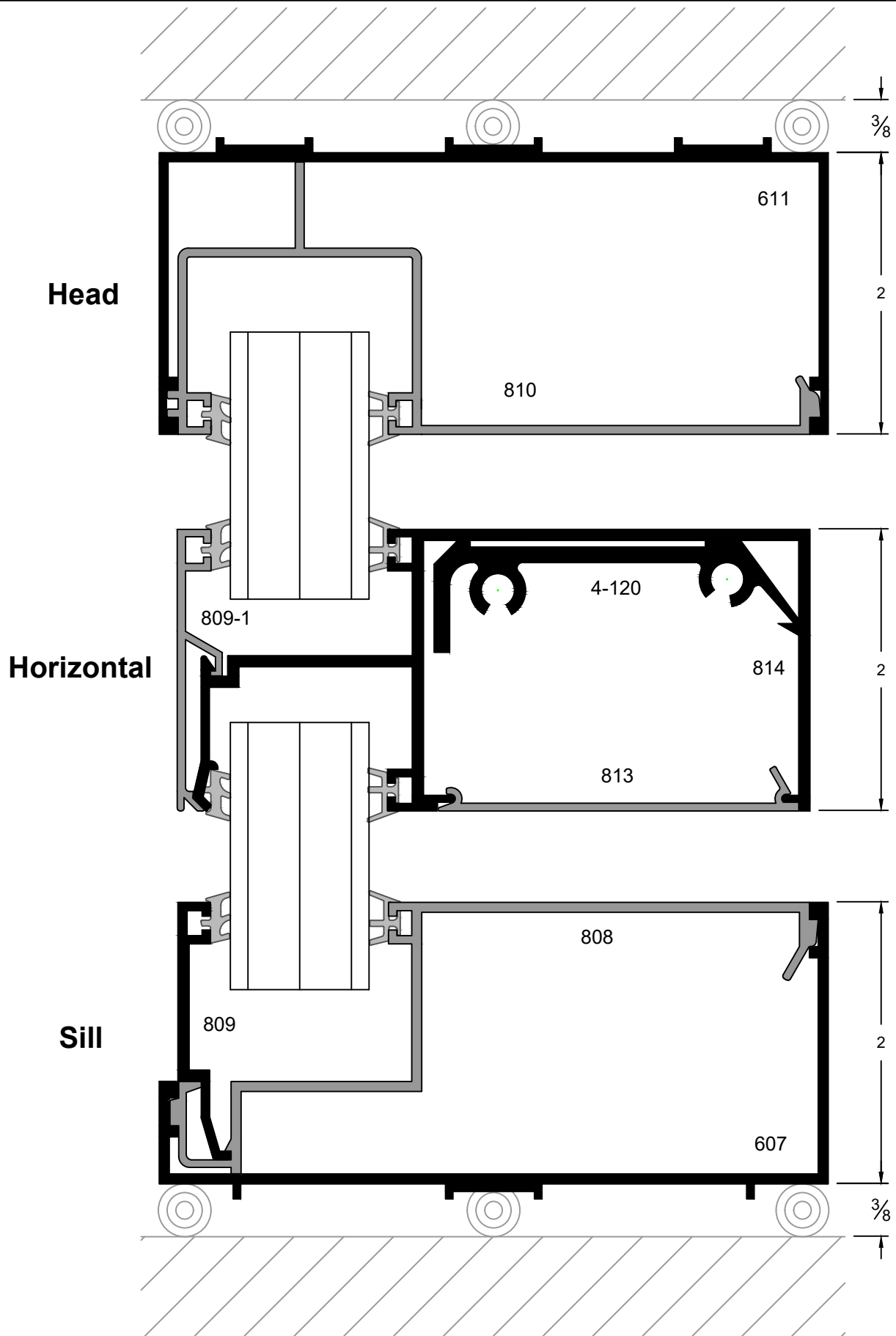
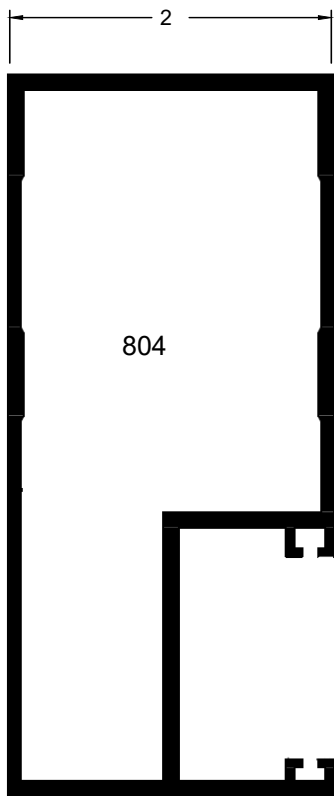


| ITEM NUMBER | DRAWING | DESCRIPTION |
|-------------|---|----------------------------------|
| 811 |  | Head Can |
| 810 |  | Head Can Filler |
| 807 |  | Sill Can |
| 808 |  | Sill Can Insert |
| 809 |  | Sill Can Glass Stop |
| 814 |  | Horizontal |
| 809-1 |  | Horizontal Glass Stop |
| 813 |  | Horizontal Filler |
| 113-1 |  | Wall Jamb Flat Filler |
| 812 |  | Wall Jamb |
| 804 |  | Vertical 1- Pocket |
| 806 |  | Intermediate Vertical 2- Pocket |
| 4-120 |  | Horizontal Clip |
| SS-61 |  | 2" x 1 1/2" 10 ga. Steel Channel |
| 8-401 | | 90° Corner Post (Offset) |
| 8-402 | | 90° Corner Post (Offset) |
| 8-403 | | 90° Corner Post (Offset) |

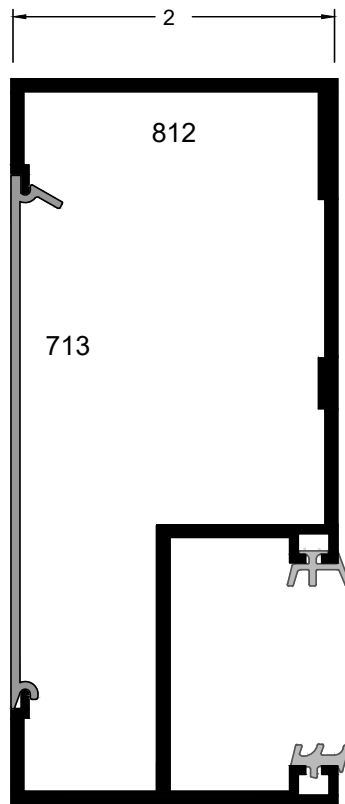




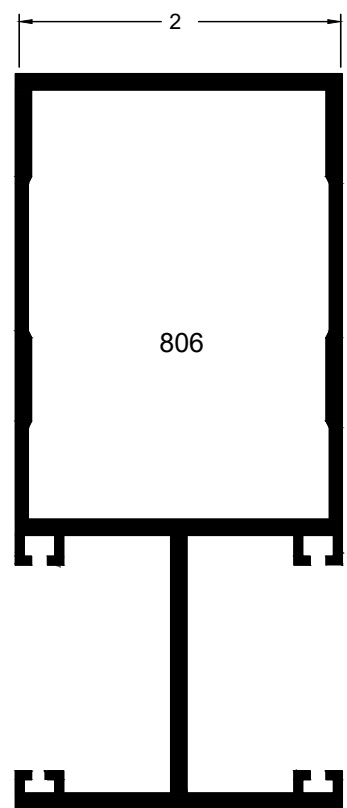




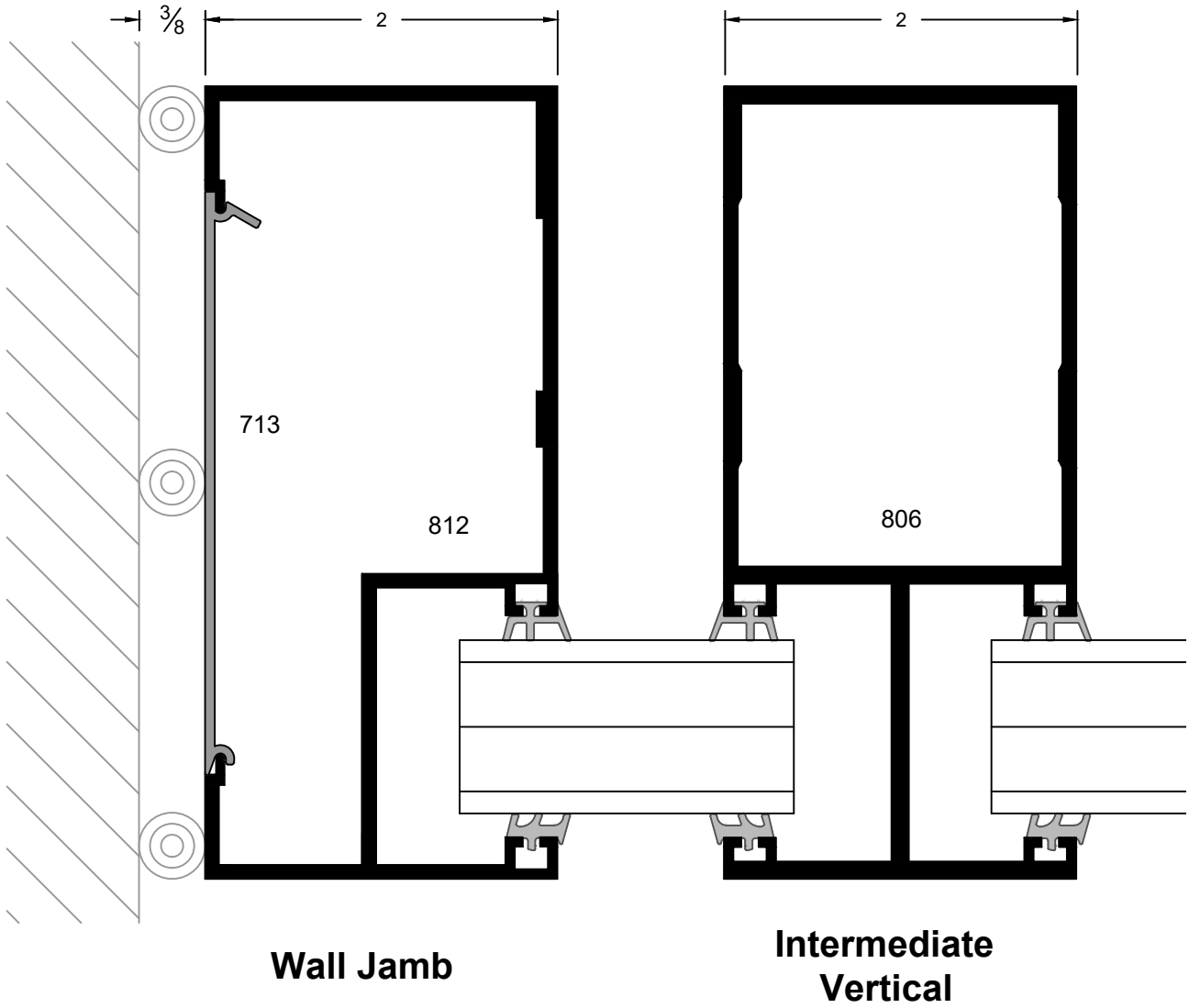
Vertical

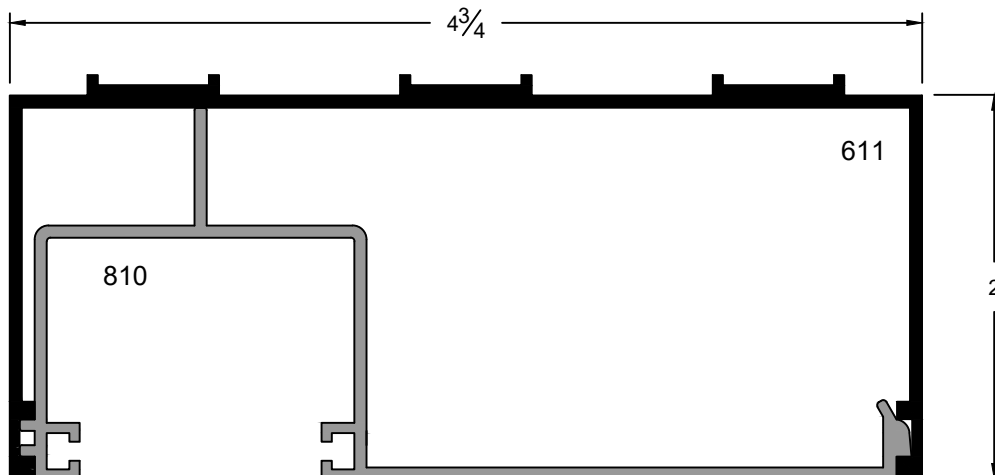


Wall Jamb

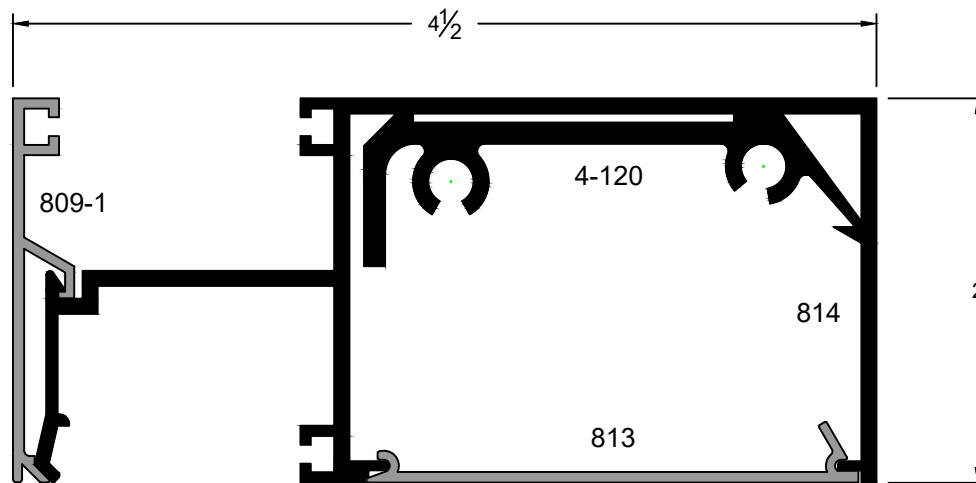


**Intermediate
Vertical**

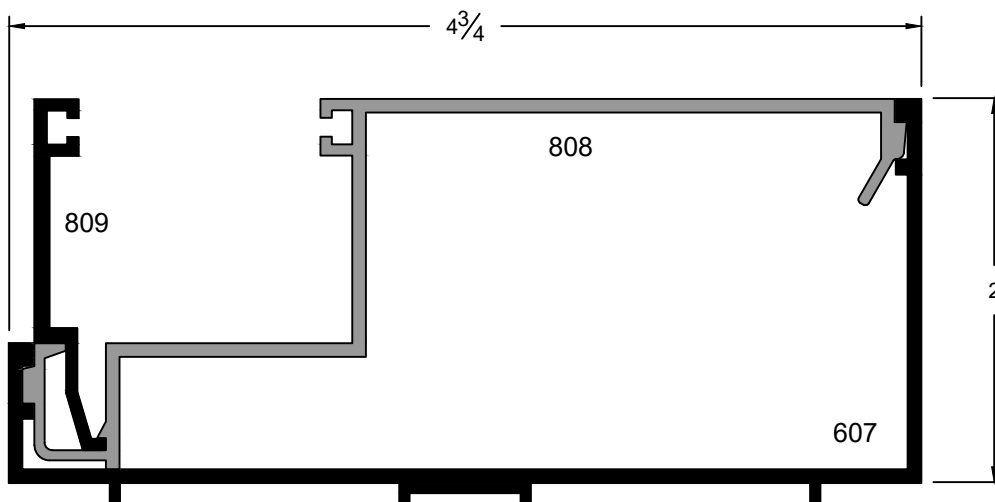




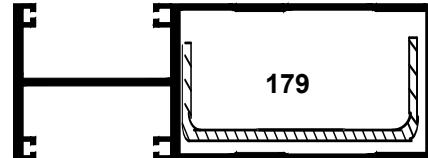
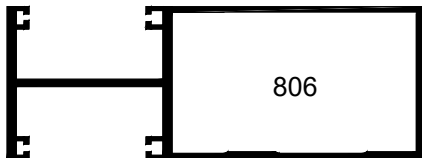
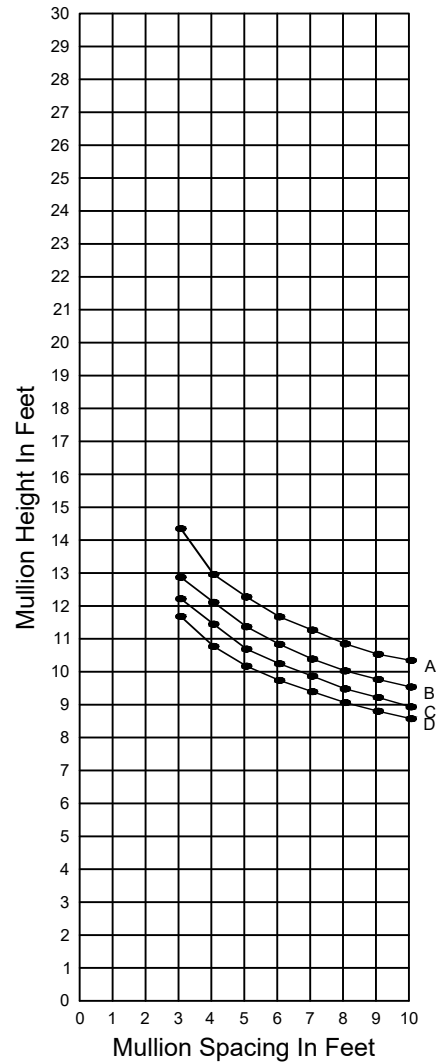
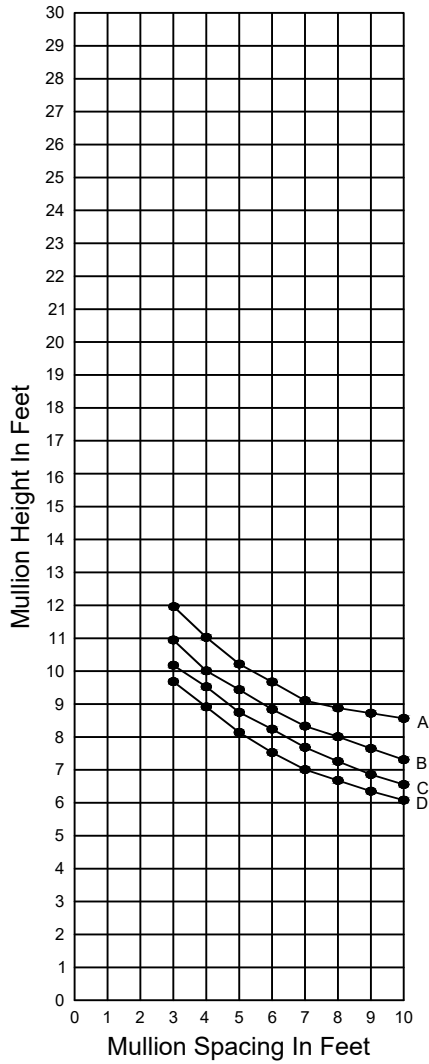
Head Can Assembly



Horizontal Assembly

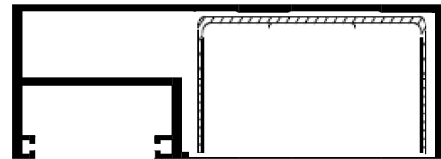
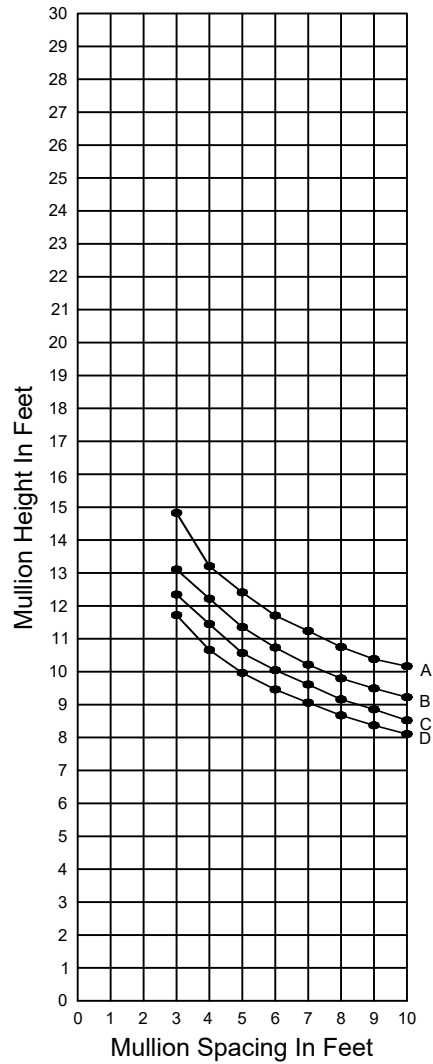
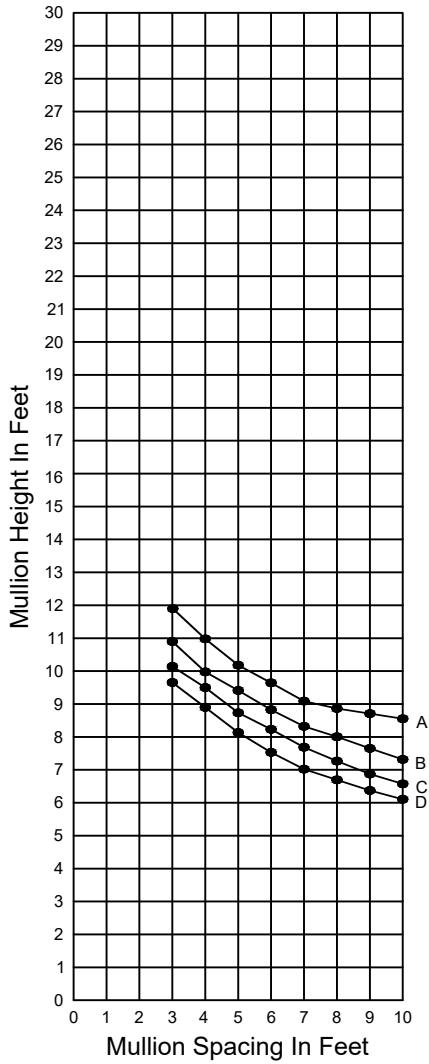


Sill Can Assembly



Curve Representation : A = 15 PSF
B = 20 PSF
C = 25 PSF
D = 30 PSF

With 12 GA. Steel Stiffener



Curve Representation : A = 15 PSF
 B = 20 PSF
 C = 25 PSF
 D = 30 PSF

With 12 GA. Steel Stiffener